

2003

$$L = 17'32$$

$$W = 708 \text{ w/h} \cdot 1752h = 1240416$$

\* Considerando como 1 unidad de materia prima 1 Kg de plástico

$$K = \frac{2849258'43}{1752} = 1780786'54$$

$$i = \frac{1780786'54}{1752}$$

CONTRACCIONES

2004

$$L = 18'68$$

$$W = 729 \text{ w/h}$$

$$1752h = 1277208$$

$$K = \frac{3239776'68}{1752} = 2203929'74$$

$$i = \frac{2203929'74}{1752}$$

Horas según convenio 1752

$$\frac{2}{1752} = 116\epsilon$$

$$2003 = 116\epsilon$$

$$\frac{2}{1752} = 116\epsilon$$

$$2004 = 116\epsilon$$

$$\frac{2}{1752} = 116\epsilon$$

- Función de Producción

$$153233'4 = 17'32w + 1780786'54i$$

$$128795'62 = 18'68w + 2203929'74i$$

$$\frac{153233'4}{17'32} - \frac{1780786'54}{17'32} = w \quad , \quad w = 8847'19 - 102816'77i$$

Substituyendo

$$128795'62 = 18'68 \left( 8847'19 - 102816'77i \right) + 2203929'74i$$

$$128795'62 = 165265'5 - 1970617'2i + 2203929'74i$$

$$13530'12 = 289312'43i$$

$$i = 0'046766466$$

Sub

$$w = 8847'19 - 102816'77 \cdot 0'046766466 = 40388'1$$

$$Q = 40388'1 L + 0'046766466 K$$

Recha moate.

$$C = w \cdot L + i \cdot K \quad \text{dependo } K$$

2003

$$C = 12404'16 \cdot 11'32 + 1'6 \cdot 1780786'519 = 3064098'48$$

2004

$$C = 12772'08 \cdot 18'68 + 1'47 \cdot 2203929'214 = 3478359'134$$

calculo

$$\begin{cases} 3064098'48 = 11'32 w + 1780786'519 i \\ 3478359'134 = 18'68 w + 2203929'214 i \end{cases} \quad \begin{cases} \frac{3064098'48}{11'32} - \frac{1780786'519 i}{11'32} = w \\ w = 176910'49 - 102816'7736 i \end{cases}$$

$$3478359'134 = 18'68 (176910'49 - 102816'7736 i) + 2203929'214 i$$

$$3478359'134 = 3304697'293 - 1920617'331 i + 2203929'214 i$$

$$173661'841 = +283312'38 i$$

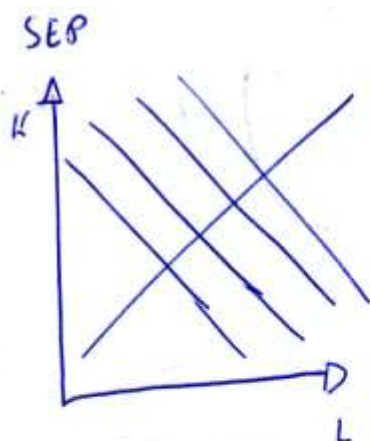
$$i = 0'612969475$$

$$w = 176910'49 - 102816'7736 \cdot 0'612969475$$

$$w = 176910'49 - 63023'54 = 113887'45$$

$$C = 113887'45 L + 0'612969475 K$$

↓  
Region



$$K = a + bL$$

$$\begin{cases} 1190786'519 = a + b17'32 \\ 2203929'714 = a + b18'68 \end{cases} \quad \begin{cases} a = 1180786'519 - 17'32b \\ 2203929'714 = 1180786'519 - 17'32b + 18'68b \\ 423143'195 = 1'36b \\ b = 311134'7022 \end{cases}$$

$$a = 1180786'519 - 5'388853'042$$

$$a = -3609066'523$$

$$K = -3609066'523 + 311134'7022 L$$

Función de CT.

$$\begin{cases} q = 4038'81L + 0'646766466 K \\ C = 11388'45L + 0'612969425 K \\ K = -3609066'523 + 311134'7022 L \end{cases}$$

$$\begin{cases} q = 4038'81L + 0'646766466 (-3609066'523 + 311134'7022 L) \\ C = 11388'45L + 0'612969425 (-3609066'523 + 311134'7022 L) \end{cases}$$

$$\left\{ \begin{array}{l} q = 4038'31 L - 168736'2398 + 14550'67 L \\ q = 18589'48 L - 168736'2398 \end{array} \right. \quad \frac{q + 168736'2398}{18589'48} = L$$

Substituo

$$CT \equiv C = 304603'5251 \left( \frac{q + 168736'2398}{18589'48} \right) - 2211630'965$$

$$CT = 16'3858 q + 553242'589.$$

$$C_M = 16'3858$$